



KWC

KWC Professional

Industrial
washroom solutions

Long-lasting, functional
sanitary fittings





KWC Professional

The ultimate choice

KWC Professional, as part of the KWC Group, concentrates on intelligent fixtures and taps for sanitary facilities in (semi-)public and commercial facilities. For our customers, we design what was once impossible and then implement it in practice in an innovative manner. Working together, we develop aesthetically attractive and complete washroom solutions.

Content

The world of work in the 21st century is changing at a rapid pace. Modern technology, automation and digital processes pose huge challenges, not only for businesses but for employees too. Clean, hygienic washrooms and workspaces show your employees how much you value their dedication and effort. Robust fittings that reduce the work required for maintenance and servicing, combined with energy-saving, convenient fittings form the ideal basis for establishing this value.

Industrial production	06
Food processing industry	14
Chemical industry	22
Disinfectant dispensers	30
Emergency showers	32

True to our philosophy.

Each of our product developments is based on the underlying principle of continuous further development of future-proof fittings by KWC Professional. Our comprehensive product philosophy essentially follows three basic requirements:



1. Stainless steel material

The use of 304 chrome-nickel steel as a starting material for equipment in industrial and commercial sanitary and employment facilities is now standard – for good reason. The material is robust, easy-care and therefore particularly cost-effective. Robust and easy-to-clean sanitary fittings keep maintenance and servicing costs to a minimum. An additional bonus for the environment: New stainless steel products are made of at least 65 % recycled stainless steel.

2. MIRANIT material

Sanitary equipment products made of a shatter-proof, resin-bonded mineral material are ideally suited to the modern, aesthetically pleasing design of sanitary facilities. MIRANIT products are cast in one piece, with no adhesive seams and joints, and stand out with exceptional properties including high stability and elegant grace. The smooth, pore-free, hygienic gel coat surface also provides exceptional durability and resistance.

3. Modern technology

KWC Professional multiple washbasins and washtroughs are welded seamlessly in an innovative robotic laser welding process and meet the strictest hygiene requirements, even under demanding conditions. The tried-and-tested InoxPlus surface finish has enabled us to optimise the stainless steel material, which was already easy-care, even further. The result takes the form of surfaces that are easy to clean and that resist fingerprint marks, thanks to their in-depth surface enhancement.





Our material surfaces meet the highest quality requirements.



Stainless steel, high-polished

Surface that meets high quality standards



Stainless steel with a satin finish

Unpolished, robust material finish

**INOX
PLUS**

InoxPlus surface refinement

During the refinement process with proven INOXPlus technology, nano-particles interlock with the molecules of the metal surface and nestle closely up against small microscopic imperfections. The resulting extremely fine structure makes fingerprints almost invisible.

More space for new
working environments





From a simple space to a contemporary washroom.

For clean hand washbasins without
internal corners or edges.

Physical stress is part of many people's everyday work in industry and trade, convenient hand and body washing facilities provide welcome refreshment before heading home. Flexible, safe and user-friendly sanitary solutions are what is needed here. Functionality, water-conserving and energy-conserving products, low maintenance and servicing expenditures, as well as cleanliness and good cleaning characteristics are key decision criteria.



Ergonomically designed washbasin rows made of robust mineral granite with a hygienic, pore-free surface are fitted with fitting units with single lever mixers.

Products in the room: FUTURA exclusive row washbasin systems made of MIRANIT, fitting units with F5L-Therm single lever mixers, also double-rowed F5S-Therm shower fittings, AQUAJET-Slimline shower heads





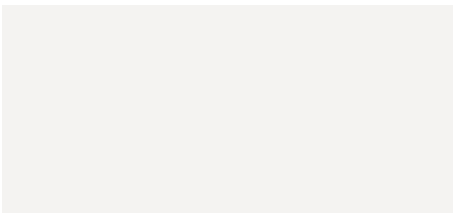
MIRANIT – the material

Sanitary equipment
cast in one piece.

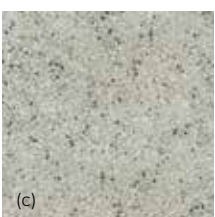
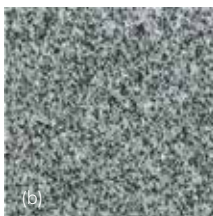
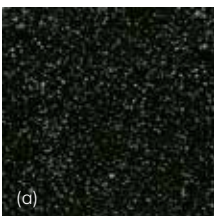
FUTURA exclusive row washbasin systems made of MIRANIT also featuring a clear design with flat surfaces and small radii.

MIRANIT

Due to its outstanding fluidity, this resin-bonded mineral material can be molded in any shape and stands out thanks to its high stability, extreme resistance and attractive design. The smooth, pore-free, hygienic gel coat surface repels dirt, comes in the Alpine white color as standard, and is temperatureresistant up to 80 °C. In most cases, all that is required to clean it is a damp cloth; any potential surface damage can be repaired using special repair kits.



Alpine white



For an additional cost, KWC Professional offers mineral granite products in additional colours, Granite Black (a), Granite Black/White (b) and Granite Light Gray (c). These versions are temperature-resistant up to 65 °C.



MIRANIT is a stable compound consisting of approximately 80 % natural minerals – such as marble powder, sandstone and quartz sand – and approximately 20 % high-quality unsaturated polyester resin.

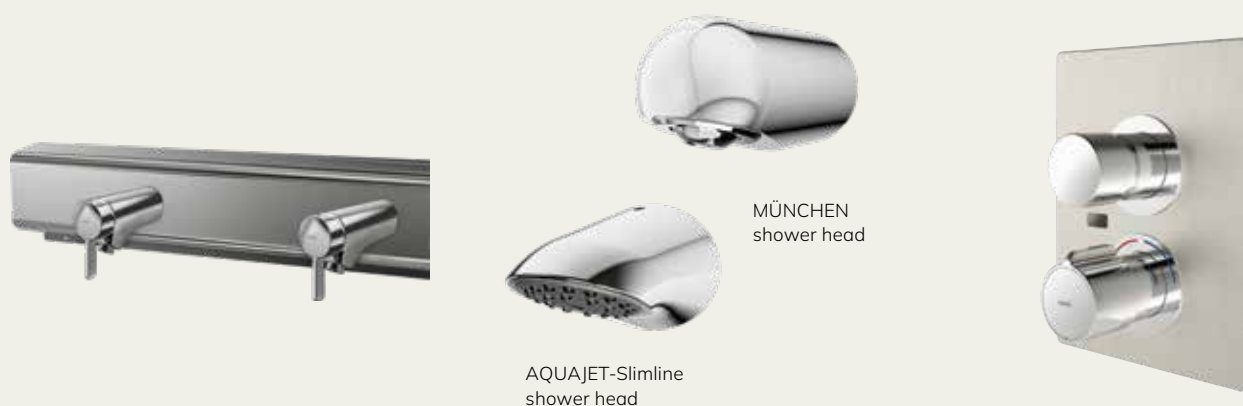


As an alternative material, KWC Professional offers seamless welded washtroughs from the PLANOX range. Made of stainless steel, they comply with the strictest hygiene requirements.



Needs-based comfort and cost efficiency.

Functional, easy to clean equipment.



Armatureneinheiten mit F5L-Therm

Die kompakten Armatureneinheiten aus geschliffenem Edelstahl sind für die Waschplatzbreiten 600, 700 und 800 mm vorgesehen. Sie können an der Wand mit drei bis sechs oder als doppelreihige Version mit vier bis zwölf Waschplätzen frei im Raum installiert werden. Ergänzt wird das Programm mit Versionen zur Hygienespülung über die letzte Zapfstelle der Einheit. Der Wasseranschluss erfolgt von hinten oder unten über Leitrohrträger. Neben der hier gezeigten Armaturenausführung F5L-Therm sind auch Selbstschluss-Eingriffmischer zur Komplettierung der Einheiten erhältlich.

Shower heads for wall connection

Its slim housing and elegant appearance makes the AQUAJETSlimline perfect for use in shower facilities that are both modern and sophisticated. Its well-distributed, low-aerosol, and low-noise shower jet provides a pleasant comfort level when showering. A clear benefit for frequently used shower systems is the special design of the anti-calcification plastic jet face which prevents annoying dripping. The showerhead base can be cleaned easily by simply wiping it. The classic MÜNCHEN shower head with an all-metal housing and automatic control of water quantity is available as an alternative with a powerful shower jet base.

F5S-Therm integrated battery

All F5S self-closing valves are equipped with the innovative, pressure-independent and stagnation-free ceramic cartridge from KWC Professional. The **Fitting Range** with **Modular Innovation Cartridge** – or FRAMIC for short – is the world's first patented self-closing cartridge with a ceramic valve. The water flow is activated by the pressure on the handle cap. The water flow stops after the flow duration which is set by the installer, without any further contact with the fitting. The optimum shower temperature can be adjusted using the thermostat handle and the integrated thermostat provides active protection from scalding. The integrated hygiene unit permits automatic water hygiene flushing and thermal disinfection of the fittings and guaranteed drinking water hygiene in compliance with regulations.

Products with experience
and passion.





Manual quality in the workplace.

Solutions for efficient operating procedures.

For washing your hands between activities, rinsing or filling bowls, pots and other utensils – when working with food processing on a daily basis, continuous hygiene for employees and their equipment is an obvious requirement.

Functionality, material selection and easy cleaning are essential for equipment in the food processing industry in order to guarantee the continuous high quality of the food being produced.

Hygienic single washbasins are complimented by stainless steel accessories with InoxPlus surface finishing on the front and a high-quality wall-mounted taps with a thermostat. The frequently used commercial sink has been combined with a wall-mounted mixer with pre-fitted disinfection unit for optimum water hygiene.

Products in the room: ANIMA stainless steel washbasin, STRATOS accessories, F5E-Therm electronic integrated wall-mounted mixer, MAXIMA commercial sink, F5E-Therm electronic wall-mounted mixer







Materials expertise honed to perfection

High-quality stainless steel for professional use.

Stainless steel

Washbasins, commercial sinks, cleaning and utility sinks, as well as other fittings made of robust, easy-care 304 chromenickel steel are commonly used in the professional food processing industry and in the commercial sector. Products made of this starting material are particularly impressive thanks to their cleaning advantages.

Stainless steel – an overview of the benefits

Stainless	Rust only appears as a result of external influences
Acid-resistant	Largely resistant to all commonly available acids used in the household
Hygienic	Outstanding disinfection capabilities against bacteria and viruses
Easy-care	Easy to clean, even when extremely dirty
Impact- and crack-resistant	Resistant to mechanical stress
Heat- and fire-resistant	Hot items do not cause burn marks
100% recyclable	New stainless steel is made from at least 65 % recycled steel

The high-quality commercial sink range is noteworthy for its wide selection, generoussized working sinks and variable storage surfaces.



The tried-and-tested SIRIUS washtroughs are also seamlessly welded. With or without the tap ledge, as a single or double washtrough, for wall or inset mounting, this wide range of fittings leaves nothing to be desired.



Versatile solutions for the workspace.



F5S-Therm
integrated
battery

F5E-Therm
wall-mounted
mixer

RODAN electronic soap dispenser

The robust, hygienic stainless steel accessories with a material thickness of 0.8 mm come in outstandingly functional designs. RODAN accessories are the perfect choice for modern accessories in frequently used sanitary facilities and offer customers value and attractive design. Touch-free soap or disinfection dispensers (for more information, see p. 32) in this accessory range make an effective contribution to implementing hygiene concepts.

STRATOS paper towel/waste bin combination

With a comprehensive selection of STRATOS accessories, sanitary facilities stay cleaner for longer, due to the proven Inox- Plus technology finish. The close bond between nano-particles and the satin finished material surface compensates for any miniscule unevenness, guaranteeing that the surface is easy-care and that fingerprints on the surface are almost invisible. The STRATOS accessories range includes products for both wall mounting and recessed mounting.

F5E-Therm electronic thermostat with in-wall or wall-mounted mixer

The product line is exceptional, both visually and haptically, and impresses with geometrical elegance and distinct design elements. Intelligent, hygienic and – last but not least – environmentally friendly, the fittings set new standards when it comes to attractive sanitary facilities in a professional context. The innovative electronic fittings in the F5-line stand out thanks to rapid infrared detection, programmable functions and control options including integration in the AQUA 3000 open water management system.

State-of-the-art and safe
with KWC Professional







Resistant, safe
and versatile.

Products in the room: F5L-Therm single lever wall-mounted mixer, RODAN stainless steel accessories, SIRIUS utility sinks and washtrough, SIRIUS shoe- and boot- cleaning unit. In the background: PLANOX washtrough with F3S-Mix self-closing wall-mounted mixers

It is impossible to picture the modern world of work without clean, hygienic, comfortable washrooms. Attractive and robust sanitary systems for a range of applications are as much a part of any business as state-of-the-art industrial production technology. In this respect, parameters such as easy maintenance and care, energy efficiency, and comfort and convenience play a decisive role when selecting products.



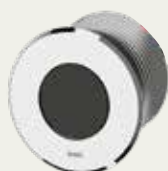
SIRIUS shoe- and boot-cleaning unit

After walking through industrial plants, workshops or laboratories, it is ideal if staff can clean their work shoes or boots quickly and easily. Stainless steel is ideal for this purpose thanks to its robustness and durability – this material is capable of withstanding extreme stress. Dirt and grease can be washed off easily from the smooth, pore-free surface. Scratches and nicks soon lose their hard-edged contours and blend into the surface.



CAMPUS WC washbasin

A bright and friendly design, combined with durable and easy-clean surfaces supports the clean appearance of toilet facilities. For sanitary fittings, wall-mounted WC pans made of robust stainless steel with certified flushing according to EN 997.



F5E urinal flush valve

Opto-electronically controlled flush valves offer a number of advantages due to their concealed mounting. The circular sensor design with integrated electronics do not protrude into the room and they have a small surface area to avoid damage. Water hygiene flushing, which initiates 24 hours after the last activation, ensures no water is left to stagnate in the pipework. The flush valve also offers the option for networked installation in to the water management system. Parameters can be adjusted, and statistical data can be exported using the optional bidirectional remote control.



EXOS. - A3000 open WC cistern control

The technical equipment used in large industrial plants can be automated and centrally controlled as a smart building. The focus is on energy optimisation of building operations to reduce operating costs and increase building safety. KWC Professional provides optionally devised sanitary solutions for sustainable operation of these buildings. The AQUA 3000 open water management system features integrated fittings that establish a balance between ecology and economy, between hygiene and consumption and between planning and operation.



AQUA 3000 open-compatible

Suitable for integration in the AQUA 3000 open water management system with accessories



AQUA 3000 open

Fitting suitable for integration in the AQUA 3000 open water management system



A variety of options
in stainless steel.

High-quality 1.4301 stainless steel, whether satin finished or polished, fulfils requirements in terms of hygiene as well as resistance to corrosion, temperature and acid. The perfect conditions for use in industrial companies.



Washbasins and washtroughs made of 304 chrome-nickel steel have proven to be especially suitable if they will be subjected to frequent use and tough demands. Cleanliness and maximum hygiene are standard requirements in all wet and production facilities. The washbasins and troughs are easy to install and made of tried-and-tested, high-quality, robust stainless steel. The material is reliably corrosion-resistant and allows for easy, hygienic cleaning.



ANIMA single washbasin

The sturdy single washbasins in this series offer a wide range of designs and provide the optimum solution for professional requirements. If needed, most ANIMA washbasins can be provided with additional holes for taps and/or soap dispensers.



RONDO round sinks

From circular to oval, from high-polished to satin finished, RONDO inset sinks are available in a range of designs and sizes. When integrated in to the deck material, individual washroom solutions can blend seamlessly into the architect's concept.



SIRIUS utility sinks with folding grid

A wide range of cleaning and utility sinks are available to meet the toughest requirements in industry and trade. These basins, made of high-quality 304 chromenickel steel with a satin finish, are fitted with practical folding grids to hold cleaning tools.



SIRIUS washing troughs

Uncompromising cleanliness is the utmost priority for seamlessly welded washtroughs that meet the strictest hygiene requirements. A sleek, evenly welded seam attaches the 1.2 mm-thick side walls to the precisely curved casing, thereby preventing dirt and bacteria from adhering to surfaces. This range offers a solution for any specification, with variants including, with or without the tap ledge, a single or double washtrough, or for wall or inset mounting.



Touch-free cleanliness
for effective protection
against infections.

Professional hand hygiene

Ideal for use on the go: The premium mounting stand made of stainless steel, with a touch-free disinfectant dispenser in the EXOS. accessories range.



We are your partner for hygiene and cleanliness in far more than just sanitary facilities

Our RODAN, STRATOS and EXOS. accessories ranges offer professional customers high-quality solutions for washrooms and WC rooms with high footfall. The electronic disinfectant dispensers in these three ranges offer additional benefits – they are ideal for fixed installation on the wall or for mobile use on a free-standing mounting stand that can be positioned in entrances, exits and corridors.

Visually, the dispensers are, of course, designed to complement the touch-free soap dispensers in the corresponding design ranges, meaning they can be installed next to these dispensers at a hand wash basins. Touch-free opto-electronic taps from the KWC Professional taps range also contribute to hygienic cleanliness.



RODAN electronic disinfectant dispenser

The puristic RODAN accessories feature a clear linear design and angular side profiles, creating a modern, attractive design in frequently used building facilities that need to meet tough hygiene requirements. The versatile range of RODAN accessories allows designers and users to create economically efficient, flexible designs for sanitary facilities



STRATOS electronic disinfectant dispenser

The STRATOS accessories range combines attractive design and clear functionality to create a modern look. This combination allows the satin finished stainless steel material to shine. The arced design guides onlookers' eyes over the sweeping, satin finished, stainless steel surfaces. Clear straight edges both contain the dispensers and ensure that they blend in harmoniously with their surroundings.



EXOS. electronic disinfectant dispenser

EXOS. accessories are particularly suitable for use in highquality sanitary fittings, such as those in offices and administrative buildings, thanks to their standardised design language and linear, timelessly elegant appearance. This range is designed to be modular and interchangeable. EXOS. products are available for surface mounting and for recessed mounting. The touch-free disinfectant dispensers can also be combined with the free-standing mounting stand.

**INOX
PLUS**

**INOX
PLUS**



Emergency showers for eyes and body.

First aid in an emergency

A space-saving emergency shower combination consisting of a body shower with a pull-handle and an eye wash fountain completes the range of first aid taps.

Emergency solutions from KWC Professional for any installation needs

Emergency showers are used in areas where employees are at risk of injuries such as contamination or burns. This includes laboratories, production facilities, kitchens, workshops, petrol stations, transport companies and pathology departments. The main hazards are highly flammable substances, aggressive

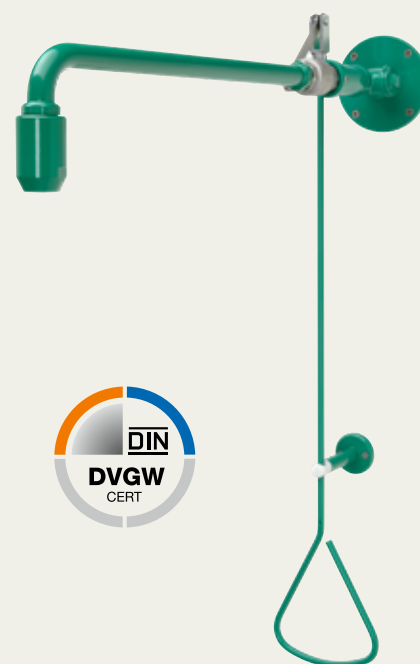
liquids, flying chips, dusts and vapours which can cause skin burns and eye injuries. Immediately applying unlimited amounts of water to the affected areas helps to limit the extent of the injuries in both the short and the long term. The correct operation and installation of these emergency shower facilities is

regulated in the relevant national and international standards and guidelines. These include the EN standards (European Committee for Standardization) 15154-1, 15154-2, 12899-3 and the ANSI standard (American National Standards Institute) ANSI Z35B.1-2014.



Emergency body showers

In case of a burn or of contact with a substance which is hazardous to health, the injured person must be able to immediately douse themselves with sufficient water. To do this, body showers must be installed at the exits of hazardous working areas. They must be easy and self-explanatory to operate. Body showers from KWC Professional comply with the standards and regulations and meet all safety requirements. With a wide variety of products, we can offer a suitable solution for every building.



Eye and face fountain with water collection basin

KWC Professional eye and body showers can be used in fixed and mobile installations. If the valve is opened with the shower in its holder, then both hands are available to hold the eyes open. If the eye fountain is removed from its holder then the source of water can be taken to the injured person. The product range not only includes complete units with a basin to catch the water, made of impact resistant, unbreakable plastic, but also versions for wall mounting and table top installation.



The ultimate
choice